

Vricon DSM-10 is a global surface model with 10m post spacing and 3m absolute accuracy, achieved without ground control points.

## **VRICON DSM-10**

### MEDIUM-RESOLUTION DSM OF THE WORLD

#### **THE BEST MEDIUM-RESOLUTION ELEVATION DATA WITH GLOBAL COVERAGE**

Vricon DSM-10 is a global medium-resolution Digital Surface Model (DSM) produced from commercial satellite imagery. Vricon DSM-10 accuracy surpasses all medium-resolution global elevation models available today and defines a new industry standard in this product class. The horizontal error relative to Vricon True Ortho is zero.

#### **Best in class at disruptive pricing**

All Vricon data products are built using the same industry-leading automated 3D production process and highest standards. The data is ready to use, and requires no inputs or labor. Vricon DSM-10 is a medium-resolution elevation product at an unmatched price point.

#### **Rapid delivery**

Instant deliveries are available from the fast growing, off-the-shelf archive via physical media or electronic download. Current delivery time for countrywide AOIs not yet on the shelf is weeks to months. Total production capacity by mid-2016 is projected at 2 million square kilometers per month.

#### **Global coverage**

Vricon's unique access to the largest commercial archive of high-quality satellite imagery provides a foundation for consistent global coverage.

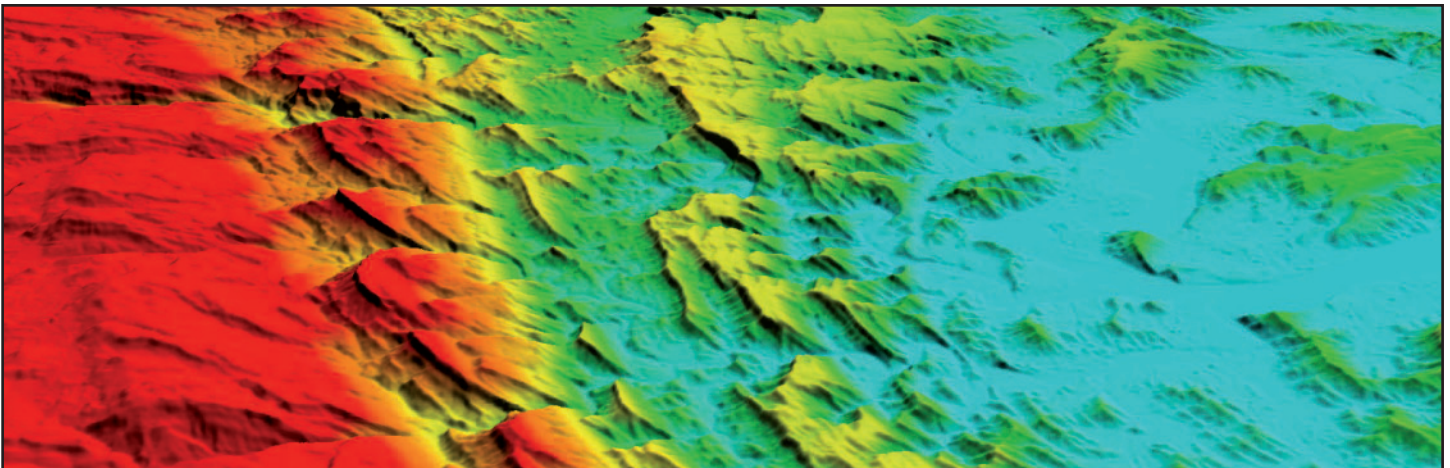
#### **Data exploitation**

Vricon DSM-10 is delivered in traditional formats, such as GeoTIFF, for immediate use in existing software and systems.

#### **Better decisions**

Vricon DSM-10 data can support analysis and decision-making in a broad range of areas:

- Security and defense
- Mapping
- Infrastructure
- Energy and natural resources
- Risk and disaster management



Vricon DSM-10 is a medium-resolution elevation product at an unmatched price point.

**Superior accuracy and technology**

Vricon DSM-10 is a medium-resolution derivative of the Vricon 3D Surface Model. All Vricon data products are built from commercial satellite imagery, using the same industry-leading automated 3D production process and highest standards. The core output – Vricon 3D Surface Model – is the most accurate representation of Earth. It is a 0.5m-resolution 3D product with real textures and an absolute accuracy of 3m in all dimensions, SE90. The accuracy is achieved without ground control points and is consistent on

all surfaces and terrain types, including building facades. SE90 is the abbreviation for Spherical Error 90%, which is a measure that combines the traditional LE90 and CE90 measures.

The core Vricon 3D technology is a unique combination of stereophotogrammetry and big data processing. The fully automated technology is sensor agnostic and does not require ground control points.

**FEATURES**

- Global coverage
- Superior accuracy
- Rapid deliveries
- Covers all terrain types
- Water flattening

**SPECIFICATIONS**

- Post spacing: 10m
- File format: GeoTIFF
- Bit depth: 32-bit
- Delivery media: FTP or HDD

*Other file formats are available on request.*

**ACCURACY**

- Absolute: 3m LE90
- Relative: 1m LE90
- Valid on all surfaces and terrain types
- Valid without using ground control points

\* Specifications subject to change without notice