



DATA SHEET

SECUREWATCH™

See a better world.®



## SecureWatch™

SecureWatch is the premier cloud-based subscription service for rapid access geospatial intelligence (GEOINT). Optimized to deliver mission-critical data, subscribers can quickly access over 3 million square kilometers of daily image collections, plus more than 6 billion square kilometers of archived imagery at up to 30 cm resolution.

DigitalGlobe satellite imagery is available to view or download in SecureWatch within 48 hours of collection, so you can monitor and communicate relevant activity in any location around the globe.

Our SecureWatch web browser interface enables imagery access and exploitation via desktop or mobile device - change analysis, annotation, measurements, etc. And you gain additional insights through integrated resources such as the tactical news feed, Human Landscape layers, and elevation data.

### SecureWatch provides indispensable GEOINT for a wide variety of use cases:

- Mapping
- Mission planning and rehearsal
- Change detection
- Border monitoring
- Order-of-battle assessment
- Pattern-of-life analysis
- Maritime domain awareness
- Damage assessment
- Humanitarian and disaster response

#### RECENT IMAGERY COLLECTIONS



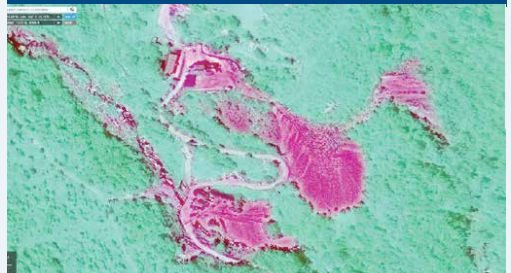
Six months of collections shown in the SecureWatch interface

#### INTELLIGENCE-GRADE RESOLUTION



30 cm image | Sohae, North Korea

#### MULTISPECTRAL IMAGERY COVERAGE



30 cm false-color image  
Punggye-ri Nuclear Test Site, North Korea

## SecureWatch Sites

- Premium subscription for persistent imagery refresh over key areas for location monitoring of facilities, border crossings, etc.
- An easy and powerful interface accessible via web browser from desktop and mobile devices



## Specifications

<b>Coverage options</b>	Global
<b>Electro-optical</b>	WorldView-4, 3, 2, 1, GeoEye-1, QuickBird, and enriched third-party sensor data
<b>Cloud cover</b>	- Full-resolution viewing and rapid download imagery (Daily Take) at 35% or less cloud cover - Additional imagery available through on-demand archive retrieval
<b>Resolution</b>	30-100 cm GSD pan sharpened at nadir, 2 m over Israel
<b>Image bands</b>	- Full-resolution viewing and rapid download imagery is panchromatic (WorldView-1) and 3-band pan sharpened natural color (all other sensors) - 8-band VNIR and SWIR multispectral products
<b>Imagery product type</b>	- Full-resolution viewing and rapid download of map-ready (level 3 orthorectified) imagery - System-ready (level 1B) and view-ready (level 2) imagery
<b>Accuracy, on global basis</b>	<10m CE90
<b>Digital elevation model</b>	SRTM 2 (30 m) where available
<b>Projection/datum</b>	UTM/WGS84
<b>Off-nadir angle</b>	- Full-resolution viewing and rapid download imagery (Daily Take) at 0-30 degrees off nadir - Imagery with higher off-nadir angles available through on-demand archive retrieval
<b>Availability</b>	DigitalGlobe imagery is available within 48 hours of collection
<b>Synthetic Aperture RADAR</b>	RadarSat-2 and Kompsat-5 over select geographies

## Deliverable

Access to SecureWatch via:

- Web browser interface
- OGC streaming services
- Google Earth plug-in
- Esri ArcGIS

## Subscriptions

Base subscription includes:

- Access to the complete DigitalGlobe image library
- Five global base layers of Human Landscape
- Available at multiple pricing levels based on data consumption

Premium subscription options:

- SecureWatch Sites - Delivers persistent imagery refresh over key defense sites
- Human Landscape - Delivers 60+ layers of human geography data on a country by country basis

## Security

- Active prevention of SQL-Injection, cross-site scripting, DoS and DDoS attacks
- Web Application Firewall that performs deep inspection of all web traffic
- HTTPS encryption of all communication between client and server
- Multi-tiered firewall approach to ensure customer data protection
- SFTP, Aspera, and AWS S3 secure downloads are supported

## Contact us for an evaluation account

International Defense & Intelligence Programs  
InternationalDefense@digitalglobe.com

For a one-year subscription of \$120,000, DigitalGlobe monitors 10 locations of interest on a monthly basis. Additional locations of interest may be added at a price of \$1,000 per site. Each site must be no larger than 12-kilometers by 12-kilometers in size.

DS-SECUREWATCH 04/2018