



DATA SHEET

# RAPID ACCESS PROGRAM

See a better world.®



## Rapid Access Program

Current situational awareness is now imperative to stay on top of ever-changing conditions on the ground. In response, DigitalGlobe has modernized the GEOINT mission by bringing intuitive and affordable web-based access from our industry leading high-resolution (30cm+) satellite constellation to your fingertips through the Rapid Access Program (RAP).

RAP gives you regional collection priority, predictable access, and virtual control and optimization of imaging operations for precise control of your mission—all from any location on the globe. Experience rapid access, rapid agility, and rapid execution for enduring mission success.

### Features & Benefits

#### On-demand Tasking

- Imagery collection aligned with your mission requirements and timeframes

#### Industry-leading resolution

- Highest level of priority access to five 30cm+ best-in-class electro-optical satellites

#### Expedited delivery

- Satellite access window imagery is processed and delivered within 6 hours of acquisition

#### Intuitive interface

- Simplified tasking and distribution available via the Rapid Access Secure Portal

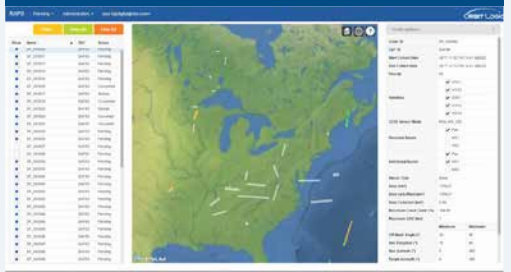
#### Security

- Customer activity in imagery collection and archive access is protected and secure

#### Affordable solution

- No hardware infrastructure to purchase; all tools and hosting within secure private cloud

### ORDER MANAGEMENT



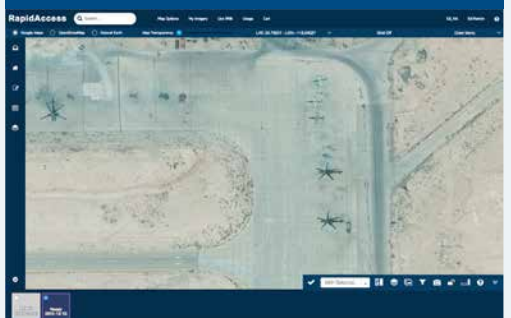
Create and manage collection orders to meet mission requirements

### TASKING



Select the satellite access windows that best fulfill mission requirements and edit collection orders up to 90 minutes prior to acquisition

### IMAGERY DISSEMINATION



Easily view, analyze, and share imagery from your satellite access window within 6 hours of collection

## Program operational scenario



<b>1. Order management</b> Reserve your satellite access window and evaluate collection opportunities	<b>2. Collection Optimization</b> DigitalGlobe completes collection optimization assessment	<b>3. Collection request</b> Submit your finalized collection requests 90 minutes before image acquisition	<b>4. Tasking</b> DigitalGlobe uplinks commands at DigitalGlobe ground terminal	<b>5. Imaging &amp; Downlink</b> DigitalGlobe collects imagery and downlink data at ground terminal	<b>6. Archive management</b> DigitalGlobe processes and hosts imagery on cloud service platform within 6 hours of image acquisition	<b>7. Product processing</b> Query your private online archive or the greater DigitalGlobe archive to order image products for download
--	--	---	--	--	--	--

## Program specifications

<b>Satellite tasking priority</b>	Highest commercially available priority
<b>Coverage</b>	Access windows restricted to Region of Interest (ROI), Global imagery through Target Tasking
<b>Sensors</b>	Satellite access and online archive ordering for WorldView-4, 3, 2, 1, GeoEye-1, and archive order only access to QuickBird
<b>Cloud cover</b>	Cloud cover protection not available for satellite access windows
<b>Resolution</b>	30-100 cm GSD pan sharpened at nadir, 2 m over Israel
<b>Image bands</b>	<ul style="list-style-type: none"> <li>Full-resolution viewing and rapid download imagery is panchromatic (WorldView-1) and 3-band pan sharpened natural color (all other sensors)</li> <li>Subsequent production orders for multispectral 4-band VNIR, 8-band VNIR, and SWIR are deliverable through the Rapid Access Secure Portal</li> </ul>
<b>Imagery product type</b>	<ul style="list-style-type: none"> <li>Full-resolution viewing and rapid download of orthorectified imagery</li> <li>Product delivery of system-ready (level 1B), view-ready (level 2), and map-ready (level 3)</li> </ul>
<b>Accuracy, on global basis</b>	<10m CE90
<b>Digital elevation model</b>	SRTM 2 (30 m) where available
<b>Projection/datum</b>	UTM/WGS84
<b>Satellite image data licensing</b>	Private, withheld from DigitalGlobe commercial archive
<b>Software Licenses</b>	Enterprise License for Purchasing Organization

## Product processing options

	Product level	Product benefits
	System Ready (Level 1B)	<ul style="list-style-type: none"> <li>Ideal for users that wish to do their own image geo or orthorectification</li> </ul>
	View Ready (Level 2)	<ul style="list-style-type: none"> <li>Ideal for image manipulation and analysis by image processing software</li> <li>Ideal for viewing and feature analysis in GIS software</li> </ul>
	Map Ready (Level 3 Orthorectified)	<ul style="list-style-type: none"> <li>Ideal for image viewing and locational reference by users requiring high positional accuracy</li> <li>Accurate to small map scales (1:50K, 1:24K, 1:12K, 1:2.4K)</li> </ul>

## SUBSCRIPTION

### Terms include:

- Access to secure, easy to use web portal for order management, collection optimization, and receiving imagery products
- Introductory customer training on location that includes live satellite access window operational scenario testing to enable your mission success
- 24x7 helpdesk access to administrative and technical support to ensure mission critical issues are handled efficiently and effectively
- Ongoing operational support, maintenance, and training to ensure you obtain the most value out of your Rapid Access subscription

## SECURITY

- Active prevention of SQL-Injection, cross-site scripting, DoS and DDoS attacks
- Web Application Firewall that performs deep inspection of all web traffic
- HTTPS encryption of all communication between client and server
- Multi-tiered firewall approach to ensure customer data protection
- SFTP, Aspera, and AWS S3 secure downloads are supported

**For additional information** please contact [InternationalDefense@digitalglobe.com](mailto:InternationalDefense@digitalglobe.com)

DS-RAP 04/18